

- [News](#)
- [Business](#)
- [Weather](#)
- [Sport](#)
- [Entertainment](#)
- [Machine](#)
- [Property](#)
- [Country Living](#)
- [Opinion](#)
- [Business Home](#)
- [Cattle](#)
- [Sheep](#)
- [Stud Stock](#)
- [Livestock Sales](#)
- [Wool](#)
- [Dairy](#)
- [Grain & Hay](#)
- [Horticulture](#)
- [Water](#)
- [Cu](#)

Support for Cattle Council

Font size: Print this article: Send this article: Article from:

Brian Clancy | November 21, 2012

3

THE Federal Government will consider giving the Cattle Council of Australia access to levy funding.

But funding will only be provided once other funding options have been exhausted.

CCA executive officer David Inall said Agriculture Minister Joe Ludwig was supportive of the council's push to reform national beef industry representation, and that such representation needed to be better funded.

Access to a portion of the compulsory \$5-a-head transaction levy for marketing is one of four reforms being promoted by the council to improve the representation for producers of grass-fed beef.

The other three are restructuring the council's board, restructuring the council's policy development and advocacy process, and expanding the membership of the council to include producers who are not members of state affiliated organisations such as the Victorian Farmers Federation.

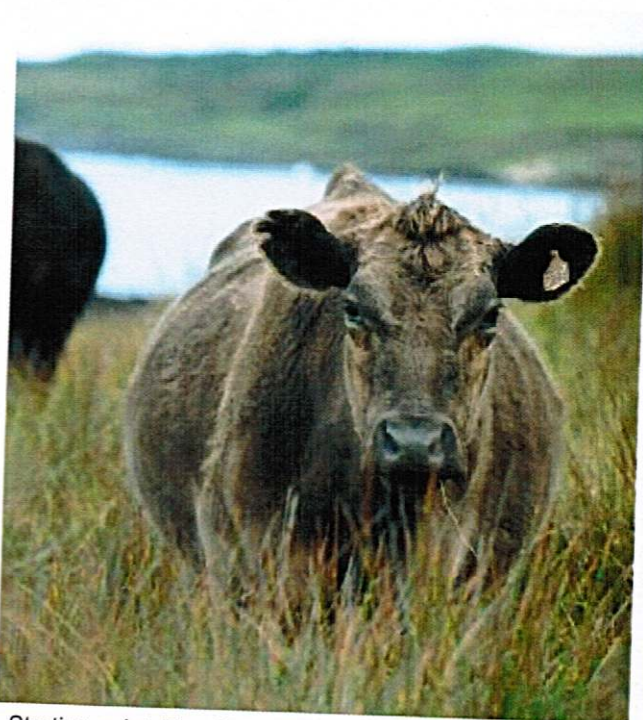
All four reforms were discussed at a three-day meeting at Fremantle, in Western Australia, last week.

Decisions from the meeting included expanding the council board to 15 directors, of which eight would be directly elected four from the north (Northern Territory and Queensland), one from Western Australia and three from the south (NSW, Victoria, South Australia and Tasmania). State farming organisations would appoint the other seven.

The council would also have three membership categories - founding (for SFO), direct and associate.

Mr Inall said one of the challenges for the council was to set a fee for direct membership that was attractive to producers but which didn't undermine the SFO membership, where subscriptions ranged from \$500-\$1500.

Mr Inall said membership fees were just one part of the funding equation. Another option was fees for services.



Starting point: The Cattle Council of Australia continues to dip its foot into reforms.

Also in Cattle

[more Cattle](#)

- > [Cattle Council's chief leaves for America](#)
- > [Producers up stake in beef sales](#)
- > [Latest livestock sales](#)
- > [Finalists in rising beef champs named](#)
- > [Aus price joy on US drought](#)
- > [Cattle Council pushes for paid work](#)
- > [Buffalo stakes rise in India](#)
- > [Latest livestock sales](#)
- > [Beef pressure on Korean deal](#)
- > [Rare treat on royal menu](#)

